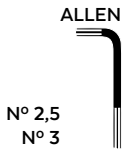


# KAWASAKI NINJA 650 '20-

## M O U N T I N G I N S T R U C T I O N S

REF 3882

ALERONES LATERALES DOWNFORCE / SIDE SPOILER DOWNFORCE



ID.	PIEZA/PART	DESCRIPCIÓN	DESCRIPTION	QTY.	REF.:
1		Base alerón derecha	Right main plain spoiler	1	10622
2		Winglet azul/negro/rojo/verde derecho	Right blue/black/red/green winglet	1	3692N/A/R/T/V
3		Base alerón izquierda	Left main plain spoiler	1	10622
4		Winglet azul/negro/rojo/verde izquierdo	Left blue/black/red/green winglet	1	3692N/A/R/T/V
5		Soporte metálico derecho	Right metal suport	1	SOPOR2P2-R-3882
6		Soporte metálico izquierdo	Left metal suport	1	SOPOR2P2-L-3882
7		Tuerca autoblocante M4	M4 locking nut	4	TUERCAE985-0290
8		Arandela de goma Ø4,5 x Ø11 x 2mm	Ø4,5xØ11x2mm rubber washer	4	ARAND-EPDM--722
9		Arandela de nylon M4x0,5	M4x0,5 nylon washer	8	ARNV00000000311
10		Tornillo M4x12 Ø9 ISO 7380	M4x12 Ø9 ISO 7380 allen screw	4	TORNI-I7380-800
11		Tuerca grafilada M5	M5 nut	2	TUERC-D6923-255
12		Casquillo Ø13xØ8x6	Ø13xØ8x6 arrowhead	2	CASQUI-----776
13		Tornillo allen M5x20 Ø11 ISO 7380	M5x20 Ø11 ISO 7380 allen screw	2	TORNI-I7380_730
14		Tapón tornillo M5 ISO 7380	M5 ISO 7380 allen screw cap	4	TAPON-----85
15		Arandela de nylon M5x1	M5x1 nylon washer	4	ARNV00000000245
16		Tornillo allen M5x11 Ø11 ISO 7380	M5x11 Ø11 ISO 7380 allen screw	4	TORNI-AI----520
17		Cinta adhesiva doble cara 10x30mm	30x10mm double-sided adhesive tape (Supplied assembled)	2	ADHESI-----263

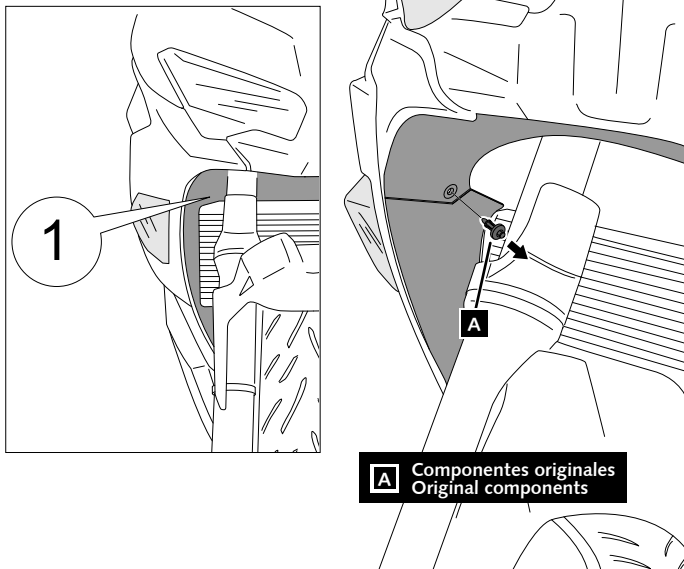
# KAWASAKI NINJA 650 '20-

## INSTRUCCIONES DE MONTAJE - MOUNTING INSTRUCTIONS - MONTAGEANLEITUNG

Se muestra el montaje del lado derecho a modo de ejemplo, realizar los mismos pasos para el montaje del lado izquierdo.  
The right side assembly is shown as an example, so the same steps can be performed for the left side assembly.

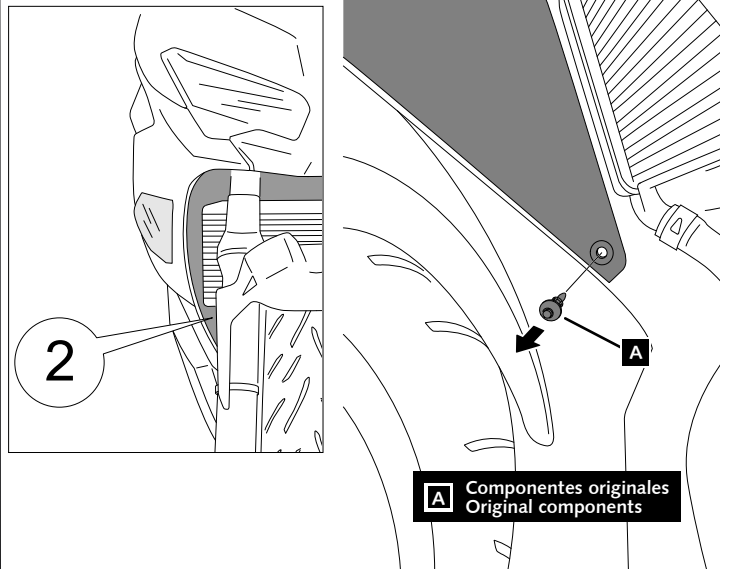
**1**

**DISASSEMBLY  
DESMONTAJE**



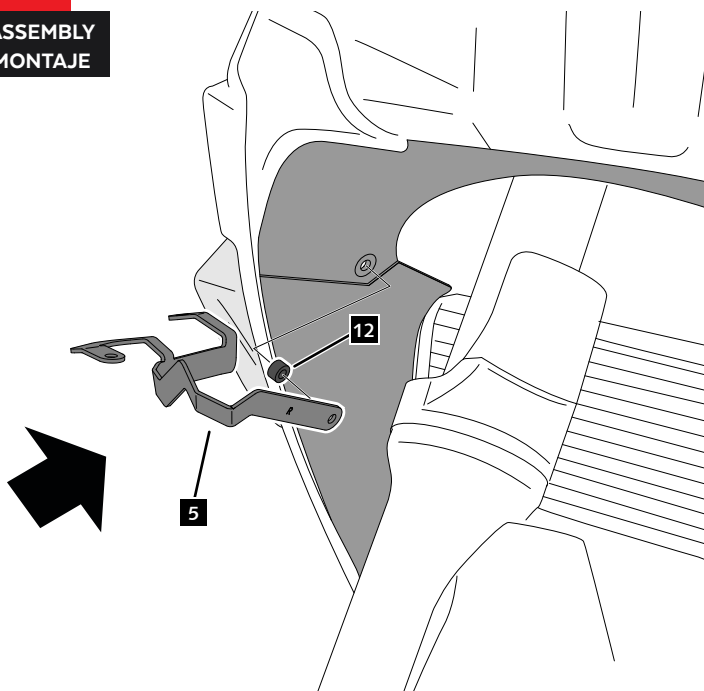
**2**

**DISASSEMBLY  
DESMONTAJE**



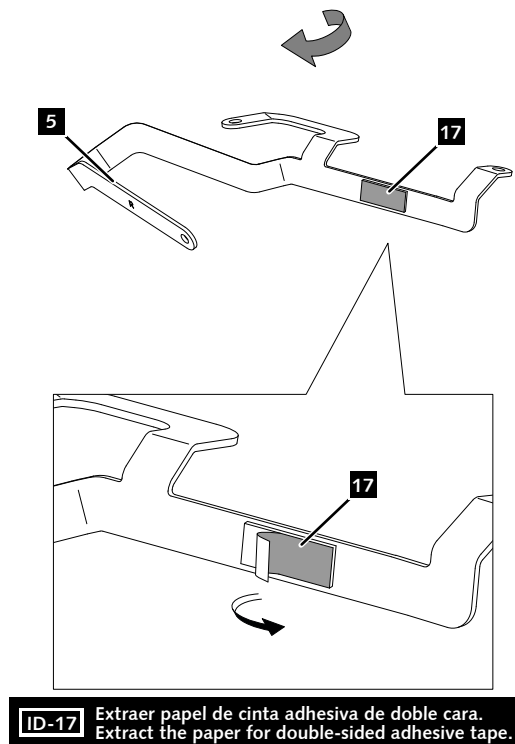
**3**

**ASSEMBLY  
MONTAJE**



**4**

**ASSEMBLY  
MONTAJE**

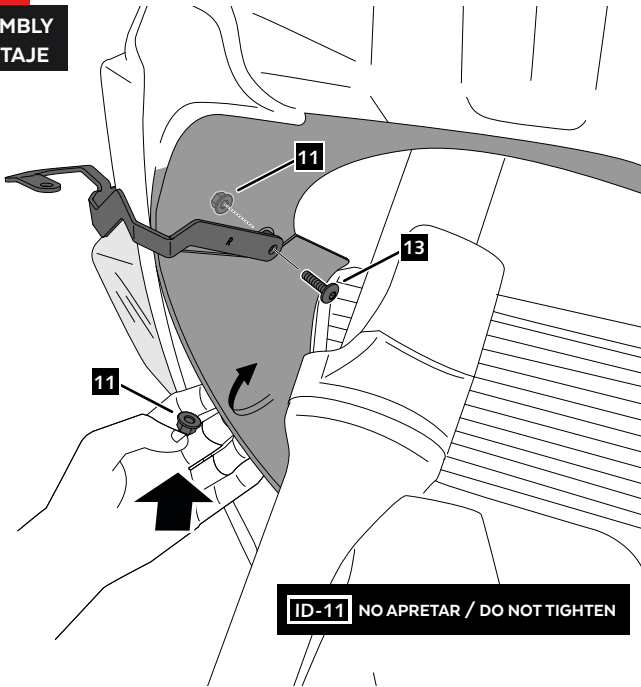


# KAWASAKI NINJA 650 '20-

## INSTRUCCIONES DE MONTAJE - MOUNTING INSTRUCTIONS - MONTAGEANLEITUNG

**5**

ASSEMBLY  
MONTAJE



APPLY PRESSURE ON ADHESIVE AREA FOR 1 MINUT.  
IDEAL TAPE APPLICATION IS ACCOMPLISHED WHEN  
TEMPERATURE IS BETWEEN 21°C AND 38° AND THE  
BOND IS ALLOWED TO DWELL 24 HOURS.

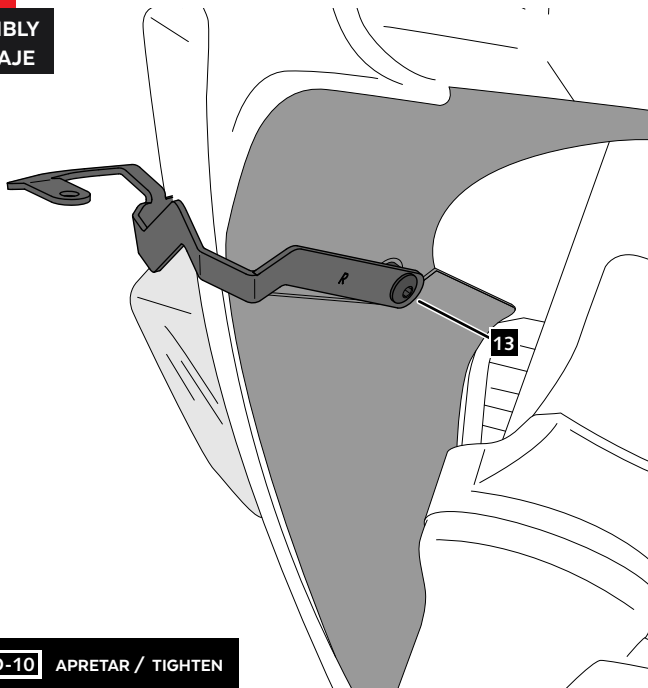
**6**

ASSEMBLY  
MONTAJE



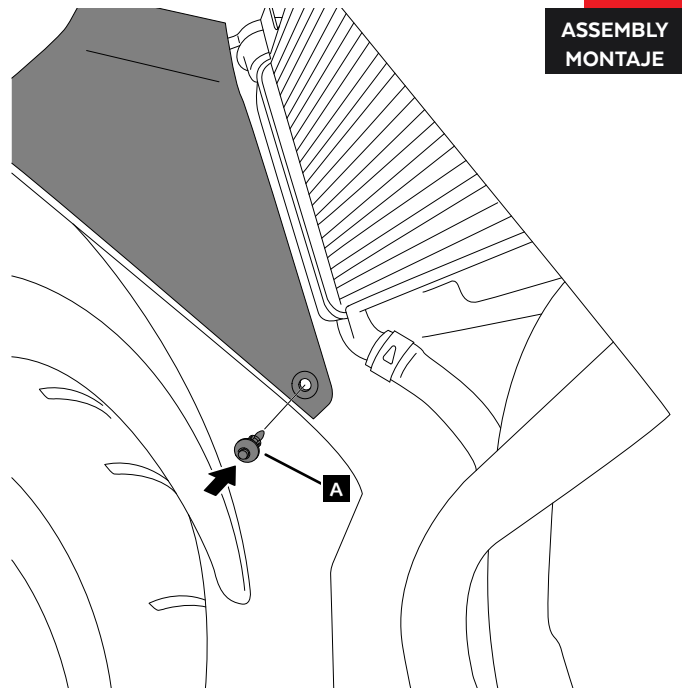
**7**

ASSEMBLY  
MONTAJE



**8**

ASSEMBLY  
MONTAJE

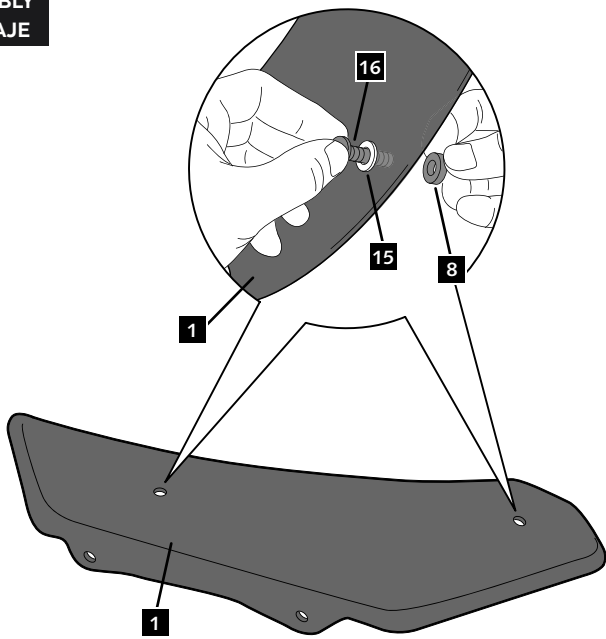


# KAWASAKI NINJA 650 '20-

INSTRUCCIONES DE MONTAJE - MOUNTING INSTRUCTIONS - MONTAGEANLEITUNG

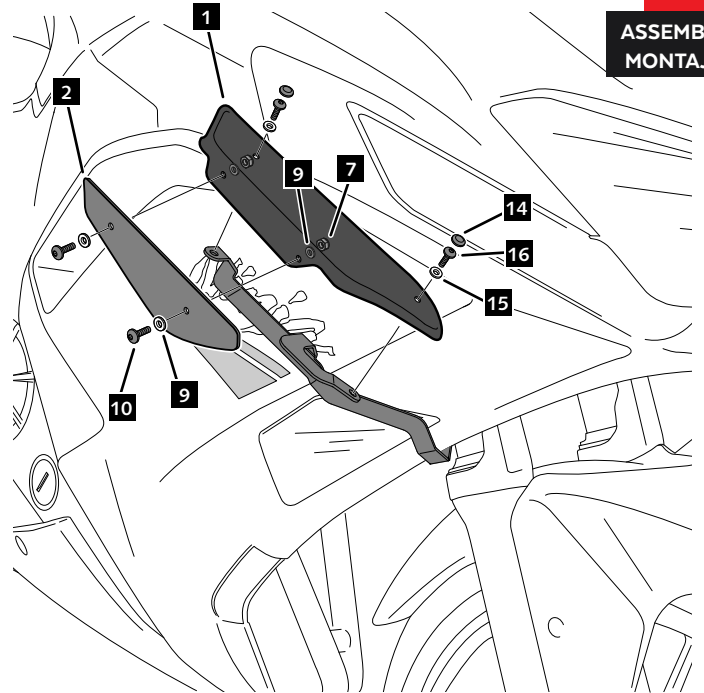
**9**

ASSEMBLY  
MONTAJE



**10**

ASSEMBLY  
MONTAJE



**11**

ASSEMBLY  
MONTAJE



POSICIONAR ALERÓN  
SEGÚN IMAGEN  
POSITION SPOILER  
ACCORDING TO IMAGE