

MOTOPLASTIC, S.A.

Molí de la sal, 1 - 08403 Granollers (Barcelona) SPAIN

Tel. 34 93 849 06 33 - Fax 34 93 849 09 88

info@puig.tv - info@puigusa.com

www.puig.tv - www.puigusa.com



En las revisiones del vehículo es conveniente efectuar también el mantenimiento de apriete de toda la tornillería del carenabrís, especialmente los tornillos que fijan éste al vehículo.

Gracias por su atención.

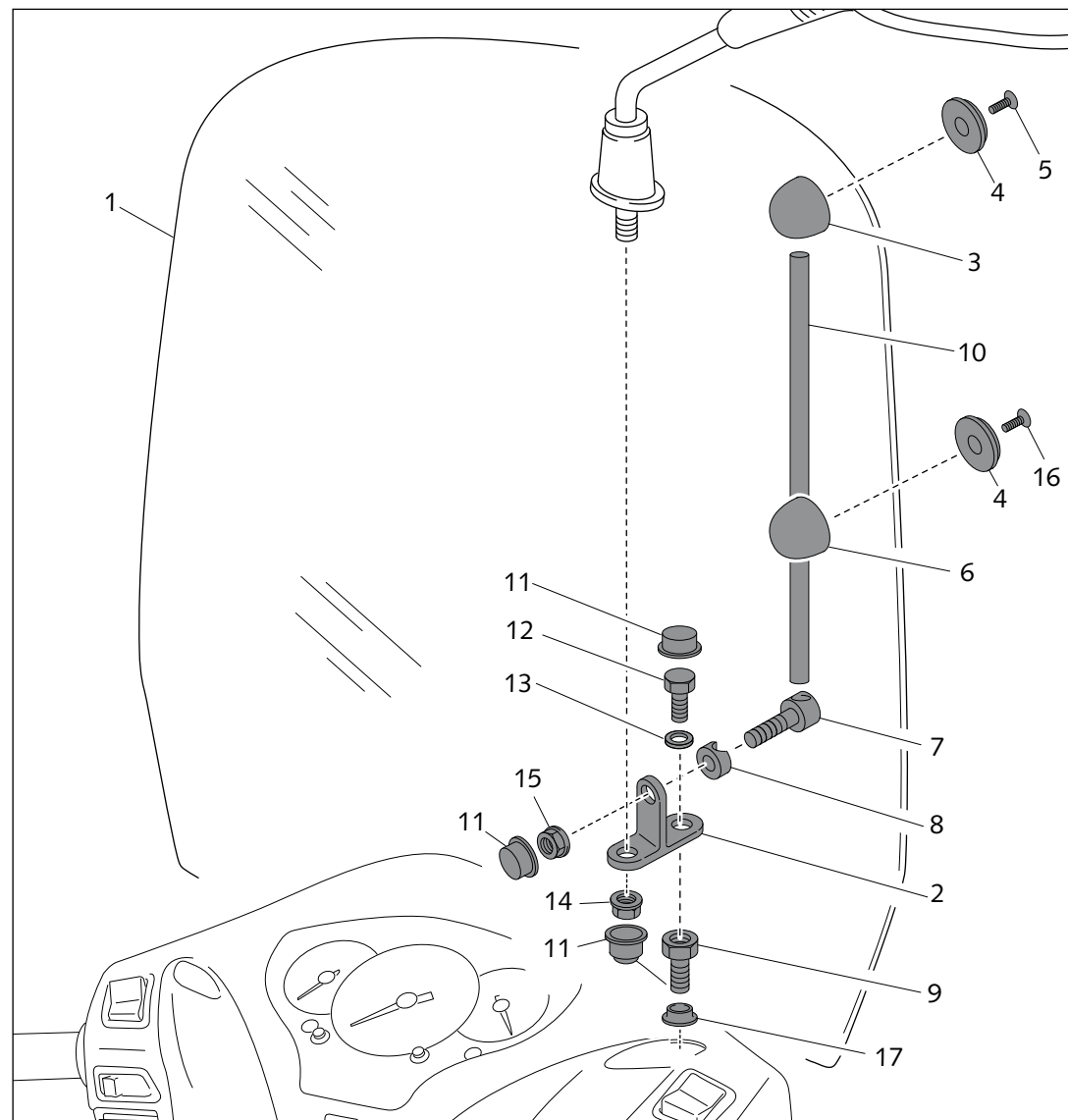
It would be convenient to re-tight the windshield screws, specially the ones that are fixed to the motorcycle, whenever you maintain the vehicle.

Thanks for your attention.

ID.	DESCRIPCIÓN	DESCRIPTION	QTY.
1	Pantalla transparente	Clear windshield	1
2	Soporte metálico 70x46 100°	Metal support 70x46 100°	2
3	Soporte de plástico	Plastic support	2
4	Arandela de plástico	Plastic washer	4
5	Tornillo M5x16 para roscar a plástico	M5x16 screw to tight into plastic	2
6	Soporte con taladro pasante	Support with drill through	2
7	Tornillo con taladro pasante Ø10,5x32	Screw with drill through	2
8	Arandela con rebaje	Special washer	2
9	Alargo retrovisor (original)	OEM mirror extension (original)	2
10	Calibrado Ø10x152	Ø10x152 bar	2
11	Caperuza plana M8	M8 nut cover	6
12	Tornillo M8x25 DIN 931 rosca izquierda	M8x25 screw DIN 931 left fastener	2
13	Arandela plana Ø8 DIN 125/A	Ø8 washer DIN 125/A	2
14	Tuerca M8 DIN 6923 rosca izquierda	M8 screw DIN 6923 left fastener	2
15	Tuerca M8 DIN 6923	M8 nut DIN 6923	2
16	Tornillo M5x14 para roscar a plástico	M5x14 screw to tight into plastic	2
17	Fuelle tapa taladro	Bellow drill cover	2

CARENABRÍS ADAPTABLE A - WINDSHIELD ADAPTABLE TO HONDA SH300i - '07-'10

Mod.: TS
Ref.: 4400W





Pulsar



The instrument cluster features a central speedometer with a scale from 0 to 180 km/h. To its left is a tachometer with a scale from 0 to 6, and to its right is a fuel gauge with a scale from 0 to F. Below the speedometer is a small digital display. The gauges are housed in a black plastic frame with various indicator lights and buttons.

